

# Break Clean

## Scenario 03 – 0500hrs, Day One

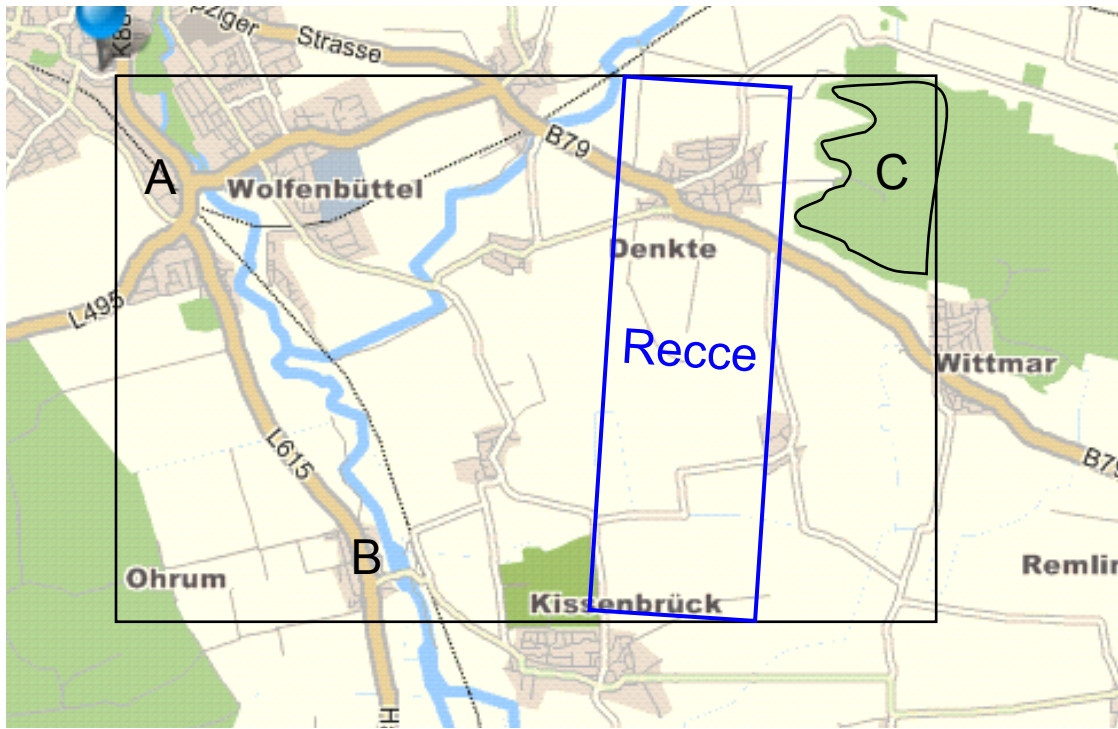
NATO OPERATIONS REPORT	
UNIT	Elements of 1 Panzer Grenadier Brigade
DATE	Day One, 4 August 1985
TIME	0500hrs, dawn from 0500, light at 0530
REGION	Area S of WOLFENBUTTEL (Hex 1844)
TERRAIN	Town Sectors at 2000m centres, open farmland with occasional wood lines (300m max length). Wooded water obstacles on the north half of the table (count as tree lines)
	All drains/ditches are only crossable at 1/3 speed by wheeled vehicles due to depth. Water obstacles crossable by all bridging types.
WEATHER	Clear, becoming cloudy by 1200, light drizzle expected in afternoon. Normal visibility
AIR SUPERIORITY	Soviet retains AS and no ground support or rotary wing support is available
ELECTRONIC WARFARE	No EW is available
SCENARIO	Advance to contact
DEPLOYMENT	Bde Recce Coy with Bde AT Coy are deployed forward in a screen in the Blue Box on defend orders until passed through by 12 Pz Gren Bn then become a reserve formation. The Recce Group has been in location for 2 hours and may complete engineering preparations. 12 Pz Gren Bn may enter from point B on a roll of 2-6 and from point A on a roll of 1 and moves to Point C. 13 Pz Gren Bn is on defend orders West of the River.

ORDERS
<p>12 Panzer Grenadier Bn has been ordered to move forward to the high ground E of WOLFENBUTTEL and establish a blocking position while the remainder of 1 Pz Gren Bde complete defensive preparations.</p> <p>12 Pz Gr Bn is to advance until it reaches either its MDP or Soviet forces are encountered. The Bn may not retire unless at least units from 2 En Battalions have been identified. NATO are to keep 12 Pz Gr Bn above 60% combat effectiveness.</p> <p>13 Pz Gr Bn is to complete preparation on the river barrier (assume to have been in location for 2 hours) and is to prevent any crossing of the river for 6 hours.</p> <p>15 Pz Art Bn is to relocate to positions further west to avoid 7 GTD elements.</p>

ORDER OF BATTLE	
12 Pz Gr Bn	Marder HQ 2 Coys 2 x Marder ICT 1 Coy 3 x M113 ICT M113/120mm Mortar
13 Pz Gr Bn	Marder HQ 2 Coys 2 x Marder ICT 1 Coy 3 x M113 ICT M113/120mm Mortar
Bde Assets (to be allocated)	2 Fuchs Engr ICT AVLB Platoon AEV
Recce Bn Group	M113 Bn HQ 2 Luchs Recce 3 Jaguar II Combat Engr ICT Fuchs

INDIRECT FIRE AND AIR SUPPORT ASSETS		
15 Pz Art Bn	15 Pz Art Bn is relocating due to enemy pressure. Roll 1D6 each turn and adding the numbers, The Bn May only conduct fire support when it has accumulated 15 points. It has 6 FM available and is in Brigade support.	Players may choose to use the moving clock special rule in place of this.

NATO players takes first turn, then roll normally for initiative.



- A – Optional NATO Entry Point
- B – NATO entry point
- C – Location of defensive position to be occupied